

# Matrix™ 2501 Rotary Slitting Module

Up to 1000  
Strips/Min\*

**Slitting Module**  
Interchangeable for  
various strip counts & widths

**Infeed Platen**  
Adjustable for multiple  
card stock sizes

**Control Panel**  
Adjustable blade speed,  
and integrated cycle counter



**Warranty: 36 Months**

The *Matrix 2501 Rotary Slitting Module* is designed to cut a wide variety of rapid diagnostic test strip products, and easily supports your slitting requirements from product development through production quantities.

[Request a Quote](#)

\* operator dependent

# Matrix™

## 2501 Rotary Slitting Module

### Capacities

- Maximum card length: 33 cm
- Maximum card thickness: 2.3 mm

### Performance

- Up to 1,000 strips per minute  
(based on cards of 50 strips being fed manually)

### Facilities Requirements

- Power: 110/220 VAC, 50/60 Hz, 10 Amp

### Dimensional Specifications (approx.)

- Size: 60 cm W x 42 cm D x 25.5 cm H
- Weight: 43 kg

### Slitting Module

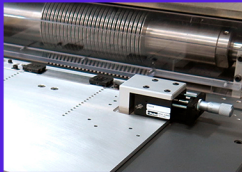
- Blade diameter: 77.343 mm
- Blade material: hardened D2 tool steel
- Weight (50 Strip Model): 27 kg

### Key Features

- Modular design
- Quick change slitting modules
- Accurately processes registered product
- Variable speed DC drive
- Low maintenance
- High throughput
- Variety of slitting module configurations offers optimum performance

### Options

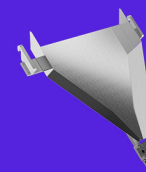
- Stretched version to accommodate card length of 45 cm (cutting area 43 cm)
- Single tapered or split output chutes with vial holders
- Positive manual micrometer registration
- Sheet to row slitting capabilities



*Mechanical Registration Option*



*Row Slitting Tray*



*Tapered Chute with Vial Clip*



Specifications subject to change without notice