

Matrix™

6300 Dip Coating for Narrow Webs

Up to 15
cm/sec



The *Matrix 6300* allows for continuous coating of delicate and narrow materials for lateral flow assays and other, similar products. The integral High Efficiency Dryer provides for an automatic drying process allowing improved efficiency and product quality.

[Request a Quote](#)

Matrix™

6300 Dip Coating for Narrow Webs

Capacities

- Web width: 5 mm – 50 mm
- Dryer chamber: standard model variable to 55°C up to 75° C with 3rd dryer option
- Dryer/blower air flow: variable, 2832 lpm max
- Drying chamber web path: variable up to 12 m

Backed nitrocellulose, conjugate, and sample membranes

- Web supply & rewind: 76 mm ID x 40 cm OD

Performance

- Web speed: 1 cm/sec – 15 cm/sec ± 2%

Facilities Requirements

- Power: 208 - 230 VAC, 50/60 Hz, 32 A single phase
- Process air: 99 lpm @ 6.2 - 8.3 bar

Dimensional Specifications (approx.)

- Size: 2.1 m L x 1 m D x 1.7 m H
- Weight: 420 kg

Operating Environment

- Relative humidity 10% to 50% at 30° C
- Temperature 1° C to 30° C

Key Features

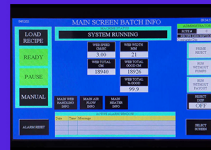
- Payout and take-up of material on reels
- Payout tension and takeup tension controlled with separate feedback loops
- Dip tank with automatic level monitoring and peristaltic pump control
- 3 Inlet blowers for drying chamber each with controllable air flow
- IR (Infrared) temperature sensor for web at exit of dryer
- Library of up to 14 different recipes with all process parameters
- Different security levels for different operations (Operator, Maintenance, R & D, and Administrator)
- Support for printing reports (printer not included)

Options

- 3rd dryer/blower element



Peristaltic pump automated to keep dip tank at set level



HMI screen



Drying chamber variable material path 3 m to 12.5 m



Specifications subject to change without notice