

# Matrix™ 6300 Automated Dispensing System

Up to 15  
cm/sec\*



The Matrix 6300 Reel-to-Reel Dispensing Platform offers continuous reagent dispensing in a compact high efficiency module for moderate to high volume production.

[Request a Quote](#)

\* operator dependent

# Matrix™

## 6300 Automated Dispensing System

### Capacities

- Web width: 5 mm – 50 mm
- Dryer Chamber: standard model variable up to 55° C ± 4% up to 75° C with 3rd dryer option
- Dryer/blower Air Flow: variable, 2832 lpm max
- Drying Chamber Web Path: variable up to 12 m

### Backed nitrocellulose, conjugate, and sample membranes

- Web supply & rewind: 76 mm ID x 400 mm OD

### Performance

- Web Speed: 1 cm/sec – 15 cm/sec ± 2%
- Pump Dispense Rate: 0.5 to 2 µl/cm ± 5%, 2 to 20 µl/cm ± 3%

### Facilities Requirements

- Power: 220 VAC, 50/60 Hz, 30 A Single Phase
- Process Air: 70.8 lpm @ 5.3 bar

### Dimensional Specifications (approx.)

- Size: 211.7 cm L x 91.6 cm D x 166.2 cm H
- Weight: 453 kg

### Operating Environment

- Relative Humidity 10% to 50% at 40° C
- Temperature 10° C to 27° C

### Key Features

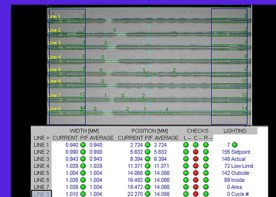
- High efficiency directed air plenum design drying chamber
- Low web tension capability
- 100% in-process inspection with reject marking
- Touchscreen operator interface for ease of setup/operation
- Multiple recipe storage
- Simple Validation
- Closed loop speed/dispense control
- Highly precise liquid delivery
- Micrometer Adjustable line positions
- Web temperature sensing

### Options

- 3<sup>rd</sup> dryer/blower element
- Contact or non-contact striping
- Dispense up to 5 lines standard system
- Dispense up to 10 lines (adds 25.4 cm to system height)
- Dip tank with peristaltic pump and fluid level sen



Optional dip tank with peristaltic pump and fluid level sensing



Vision Inspection Screen



Non-contact three line dispensing



Specifications subject to change without notice