

Matrix™ 7100 Automated Lamination System

Up to 1200
Cards/Hour



The *Matrix 7100* offers continuous lamination of diagnostic membranes in a solid, high efficiency system. The resulting laminate is cut into individual cards for further conversion in downstream processes.

[Request a Quote](#)

Matrix™

7100 Automated Lamination System

Capacities

- Web width: 6 mm to 101.6 mm
- Laminate reels: 76.2 mm ID x 355.6 mm OD
- Nitrocellulose reel: 76.2 mm ID x 226 mm OD
- Backing web reel: 152.5 mm ID x 410 mm OD
- Optional take-up reel: 154 mm ID x 925 mm OD

Performance

- Throughput: 1200 cards/hour
- (20 ea 304.8 mm cards/min)
- Card length: 200 mm to 600 mm ± 1.0 mm
- Lamination tolerance: 0.25 mm plus material width tolerance
- Speed range: 5 mm to 120 mm/sec

Facilities Requirements

- Power 208/230 VAC, single phase, 50/60 Hz, 20 A
- Process air 5 lpm @ 5.4 bar

Dimensional Specifications (approx.)

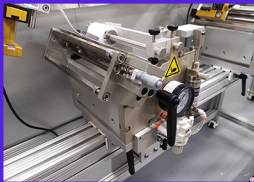
- Main system: 277 cm w x 58 cm D x 156 cm H
- Take-up reel option: 160 cm W x 60 cm D x 120 cm H
- Main system weight: 659 lbs. (299 kg)

Key Features

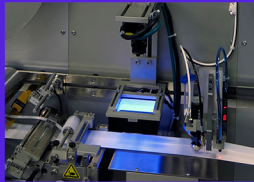
- Touch screen interface for simple setup and operation
- Simple & precise web guide alignment, on the fly adjustment
- Rapid changeover to support multiple products
- Flexible to support changing requirements
- Welded and extruded frame mounted
- Flying shear for continuous card cutting

Options

- 100% in-process inspection with reject marking
- Additional payout modules (with or without tension control)
- Take-up reel module
- Cover tape payout position
- Custom configurations



*Lamination Station
with Pneumatic Pressure*



Vision Inspection Option



Take-up Reel Option



Specifications subject to change without notice